

Faculty Research Areas

Resilience and Health of Marginalized Populations

Several HDFS faculty members focus on the resilience and health of individuals and families from marginalized populations, with particular foci on Latinx families, culture, economic disadvantage, and sexual and gender minority populations. Research projects in this area tend to focus on identifying individual, family, or contextual assets or processes that promote resilience and healthy development and relationships.



THE UNIVERSITY OF ARIZONA
COLLEGE OF AGRICULTURE, LIFE
& ENVIRONMENTAL SCIENCES

**Norton School of
Human Ecology**

CONTACT US

WEB: NORTON.ARIZONA.EDU

EMAIL: GradHDFS@ARIZONA.EDU



FIND US

650 N. PARK AVE.
TUCSON, AZ 85721

FOLLOW US



@UAZNORTON



THE UNIVERSITY OF ARIZONA
COLLEGE OF AGRICULTURE, LIFE
& ENVIRONMENTAL SCIENCES

**Norton School of
Human Ecology**



PH.D. PROGRAM

**HUMAN
DEVELOPMENT
AND FAMILY
SCIENCE**

Faculty Research Areas

Early Childhood and Adolescent Development

Many HDFS faculty members examine the influence of sociocultural contexts (e.g., cultural, community, neighborhood, early care and school), fundamentals of positive youth development, familial relationships (e.g., parents or caregivers, siblings, extended family members) and peer relationships on early childhood and adolescent health and development.

Innovative Methods and Models for Studying Families and Development

The HDFS department includes multiple faculty members with expertise in innovative, applied research methods, qualitative methods, and advanced statistical approaches designed to solve practical problems and offer research based solutions to critical questions (e.g., preventive intervention development and evaluation, participatory based action research methods, multilevel modeling, structural equation modeling, dynamic systems modeling, daily diary methods, biological processes, and intersectional methodology).

Romantic and Family Relationships Across the Lifespan

Many faculty members in HDFS focus on the wellbeing and health of family members and romantic partners across the lifespan. Emphasis is on relationship processes, familial contexts and interpersonal dynamics as important factors contributing to overall health and well-being. Faculty members examine these relationships from multiple perspectives, (i.e., individual development, relational development, dyadic and triadic experiences.)

Why study Human Development and Family Science?

- Students receive cutting edge training in family science and human development, with an emphasis on developing research skills for conducting both basic and applied research. Graduate coursework includes classes in theory, applications, and rigorous research methodology and statistics. Advanced statistics courses are regularly offered by the program.
- Students are prepared for successful careers in research, teaching, or other positions in academic, public, and private sector settings.
- Students are financially supported with research and teaching positions. Students also have a strong record of earning nationally competitive fellowships (e.g., NSF).
- Students work closely with faculty mentors who are highly invested in student success to develop programs of research that are in line with the students' interests. Students become productive scholars who participate in active research labs and collaborations, regularly present at professional conferences, take on leadership roles locally and in professional organizations, and author papers in peer reviewed journals.
- Students benefit from exposure to multiple perspectives and opportunities, including a focus across the department on conducting research that impacts individual, family and community wellbeing. Training includes opportunities for collaborative interdisciplinary research and community outreach. Students also have access to state of the art lab facilities.



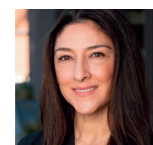
Melissa A. Barnett, Ph.D.
Professor, HDFS
Director, FMI
barnettm@arizona.edu



Nicholas Bishop, Ph.D.
Associate Professor, HDFS
njbishop@arizona.edu



Melissa Curran, Ph.D.
Professor, HDFS
Director of HDFS Grad Studies
macurran@arizona.edu



Melissa Y. Delgado, Ph.D.
Associate Professor, HDFS
Co-Chair, Latinx Families FMI
mydelgado@arizona.edu



Norma Perez-Brena, Ph.D.
Associate Professor, HDFS
nperezbrena@arizona.edu



Katherine E. Speirs, Ph.D.
Associate Professor, HDFS
Extension Specialist
kspeirs@arizona.edu



Russell Toomey, Ph.D.
Professor, HDFS
toomey@arizona.edu



Katharine H. Zeiders, Ph.D.
Professor, HDFS
zeidersk@arizona.edu